

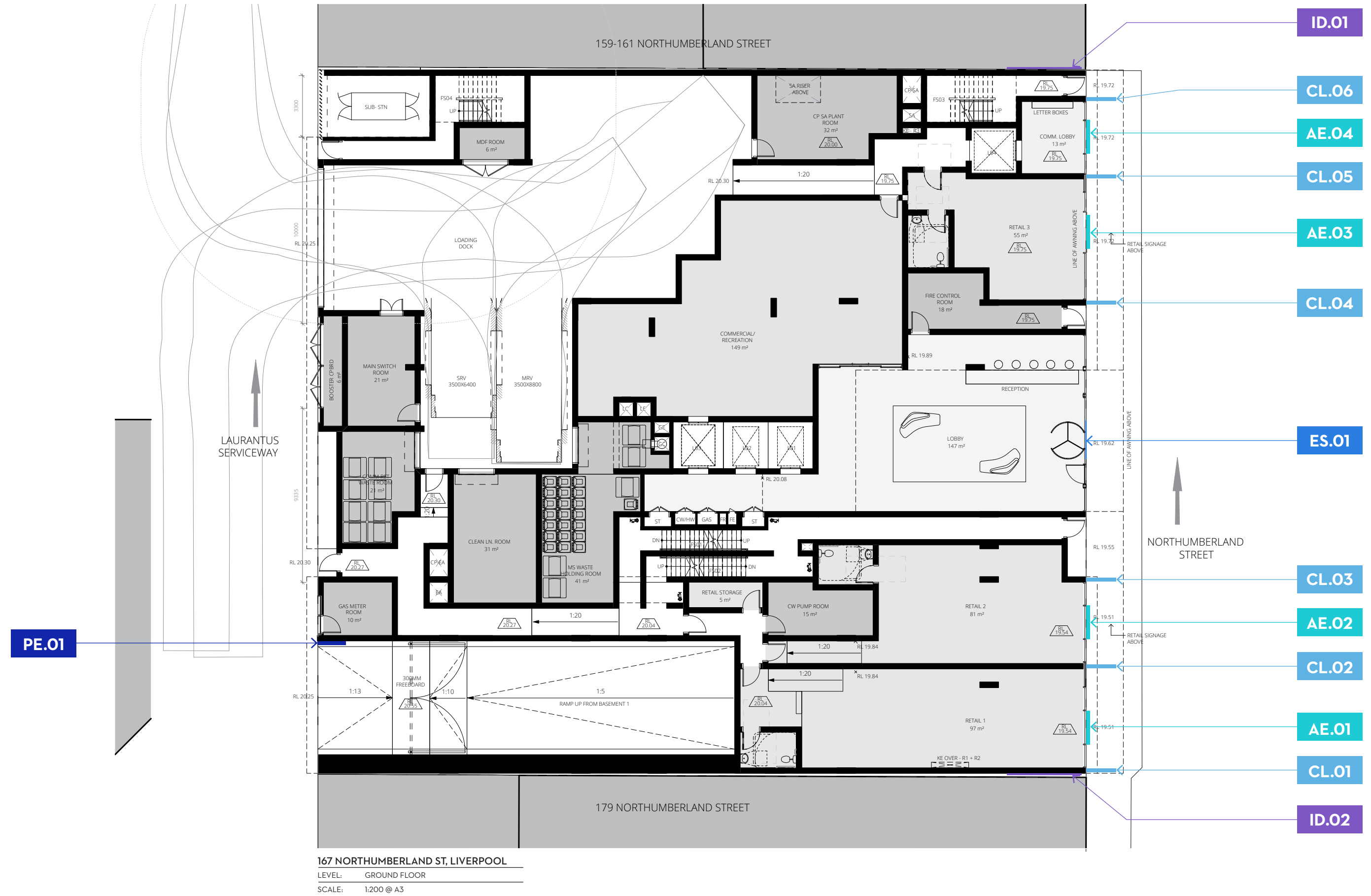


**MERITON SUITES  
LIVERPOOL  
EXTERNAL SIGNAGE**  
DA DOCUMENTATION

Meriton Group

10/03/2020

SIGNAGE LOCATION PLAN - GROUND



**DEVELOPMENT:** MERITON SUITES LIEVEPOOL

**PROJECT:** External wayfinding signage

**SITE ADDRESS:** 167 NORTHUMBERLAND ST LIVERPOOL, NSW 2170

**DATE:** 10/03/2020

**VERSION:** V1

**DRAWN BY:** TM

**PAGE:** 2 OF 16

**NOTES:** -

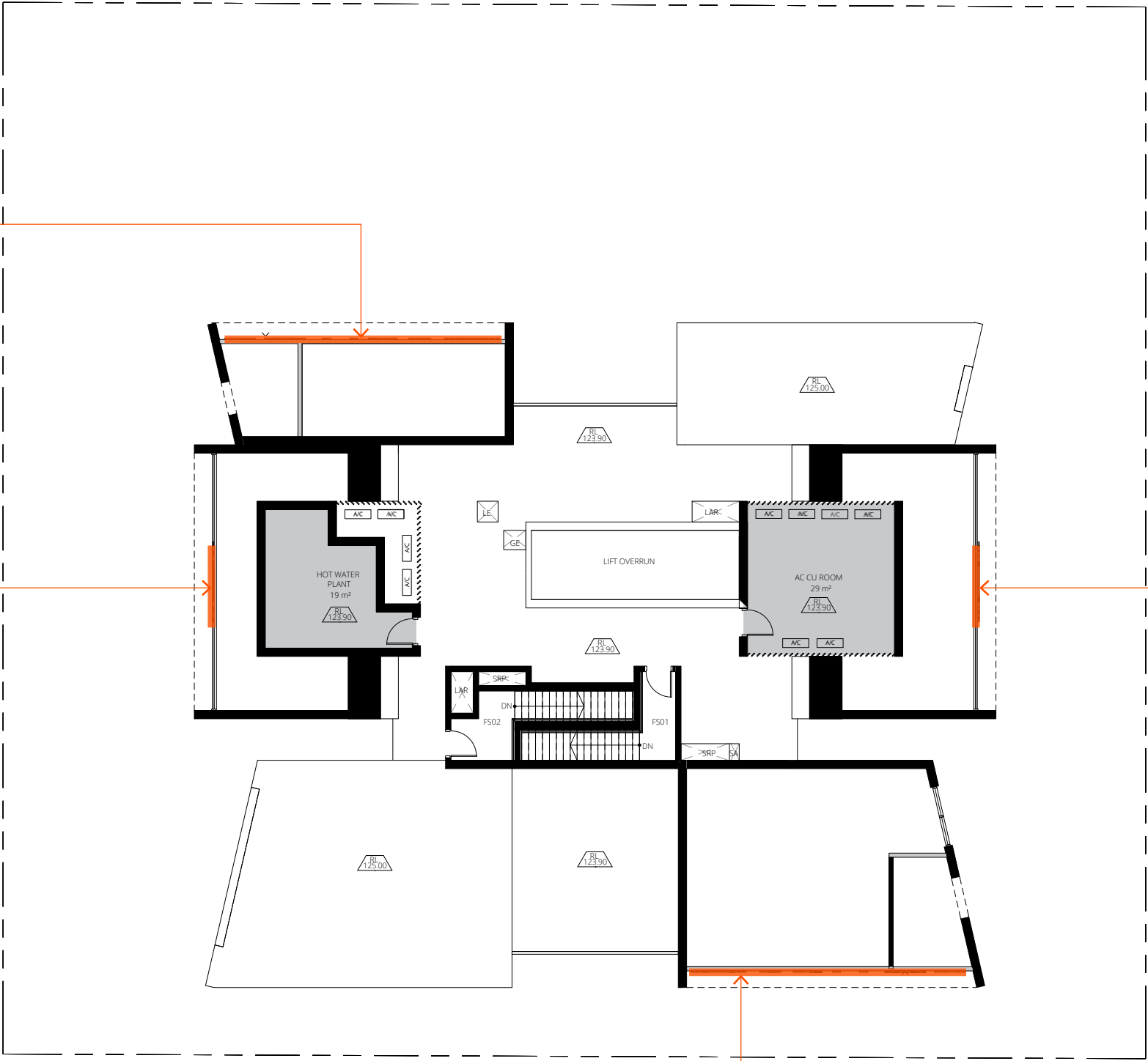
© Copyright Meriton Group 2020.  
DO NOT SCALE from this document.  
Use figured dimensions only. Contractors to check & confirm all measurements on site prior to production. This document is strictly confidential. Do not copy, distribute or reproduce without prior written consent.

SS.01

SS.02

SS.04

SS.03



167 NORTHUMBERLAND ST, LIVERPOOL  
LEVEL: ROOF PLAN  
SCALE: 1:200 @ A3

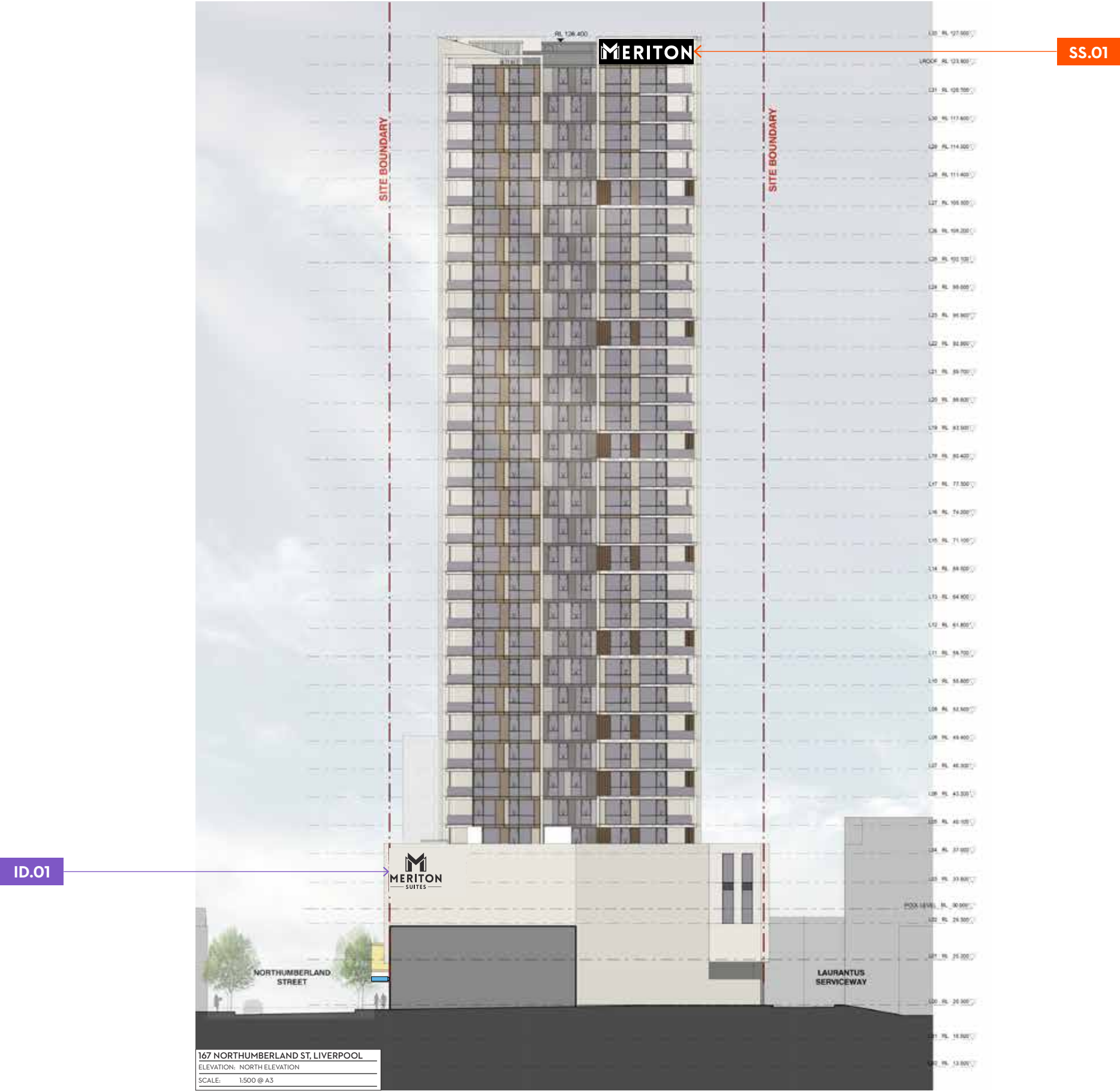


**DEVELOPMENT:** MERITON SUITES LIEVEPOOL  
**PROJECT:** External wayfinding signage  
**SITE ADDRESS:** 167 NORTHUMBERLAND ST LIVERPOOL, NSW 2170

**DATE:** 10/03/2020  
**VERSION:** V1  
**DRAWN BY:** TM  
**PAGE:** 3 OF 16

**NOTES:** -

© Copyright Meriton Group 2020.  
DO NOT SCALE from this document.  
Use figured dimensions only. Contractors to check & confirm all measurements on site prior to production. This document is strictly confidential. Do not copy, distribute or reproduce without prior written consent.



**DEVELOPMENT:** MERITON SUITES LIEVEPOOL

**PROJECT:** External wayfinding signage

**SITE ADDRESS:** 167 NORTHUMBERLAND ST LIVERPOOL, NSW 2170

**DATE:** 10/03/2020

**VERSION:** V1

**DRAWN BY:** TM

**PAGE:** 4 OF 16

**NOTES:** -

© Copyright Meriton Group 2020.  
DO NOT SCALE from this document.  
Use figured dimensions only. Contractors  
to check & confirm all measurements on  
site prior to production. This document is  
strictly confidential. Do not copy, distribute or  
reproduce without prior written consent.



**DEVELOPMENT:** MERITON SUITES LIEVEPOOL

**PROJECT:** External wayfinding signage

**SITE ADDRESS:** 167 NORTHUMBERLAND ST LIVERPOOL, NSW 2170

**DATE:** 10/03/2020

**VERSION:** V1

**DRAWN BY:** TM

**PAGE:** 5 OF 16

**NOTES:** -

© Copyright Meriton Group 2020.  
DO NOT SCALE from this document.  
Use figured dimensions only. Contractors to check & confirm all measurements on site prior to production. This document is strictly confidential. Do not copy, distribute or reproduce without prior written consent.





**DEVELOPMENT:** MERITON SUITES LIEVEPOOL

**PROJECT:** External wayfinding signage

**SITE ADDRESS:** 167 NORTHUMBERLAND ST LIVERPOOL, NSW 2170

**DATE:** 10/03/2020

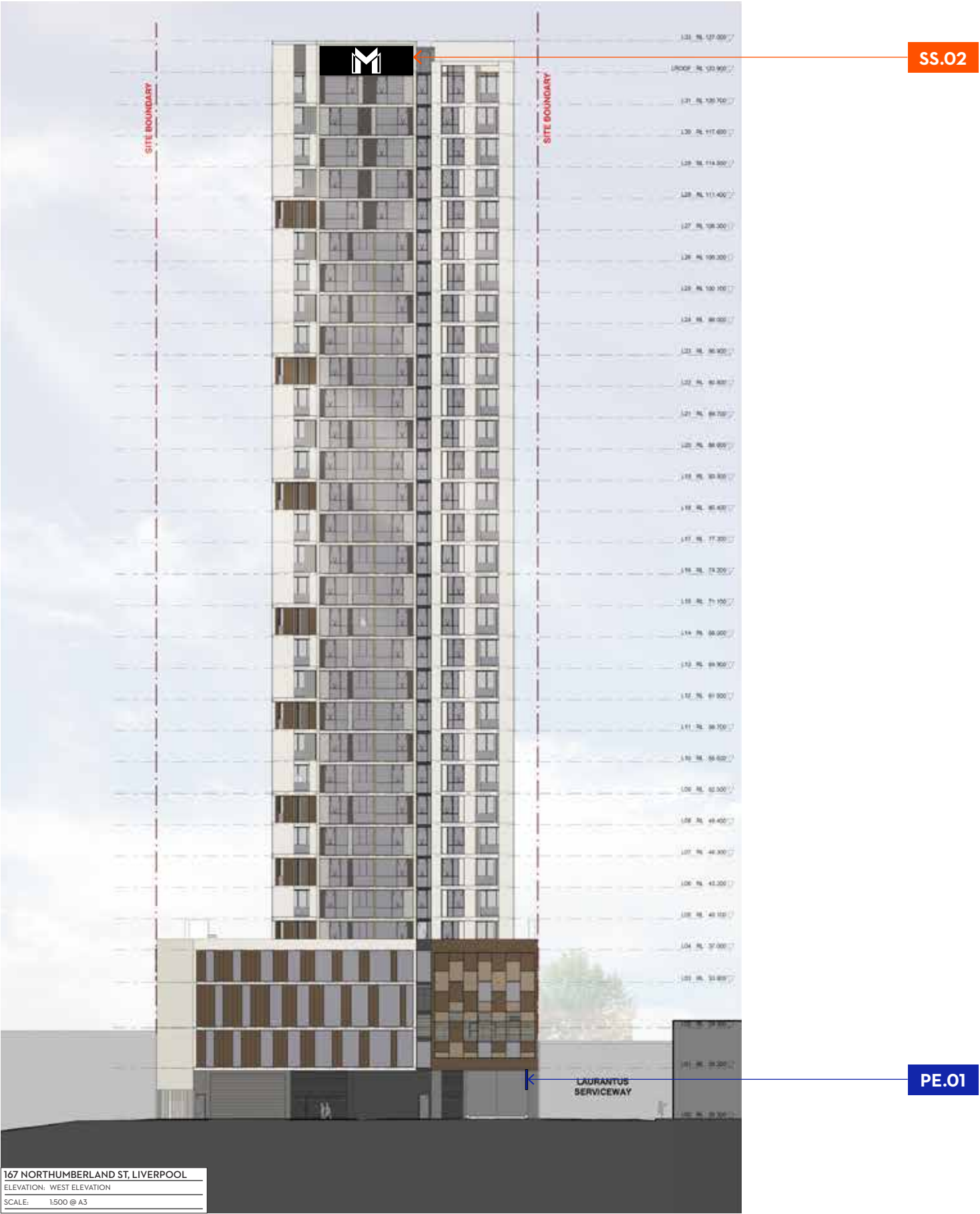
**VERSION:** V1

**DRAWN BY:** TM

**PAGE:** 6 OF 16

**NOTES:**

© Copyright Meriton Group 2020.  
DO NOT SCALE from this document.  
Use figured dimensions only. Contractors to check & confirm all measurements on site prior to production. This document is strictly confidential. Do not copy, distribute or reproduce without prior written consent.



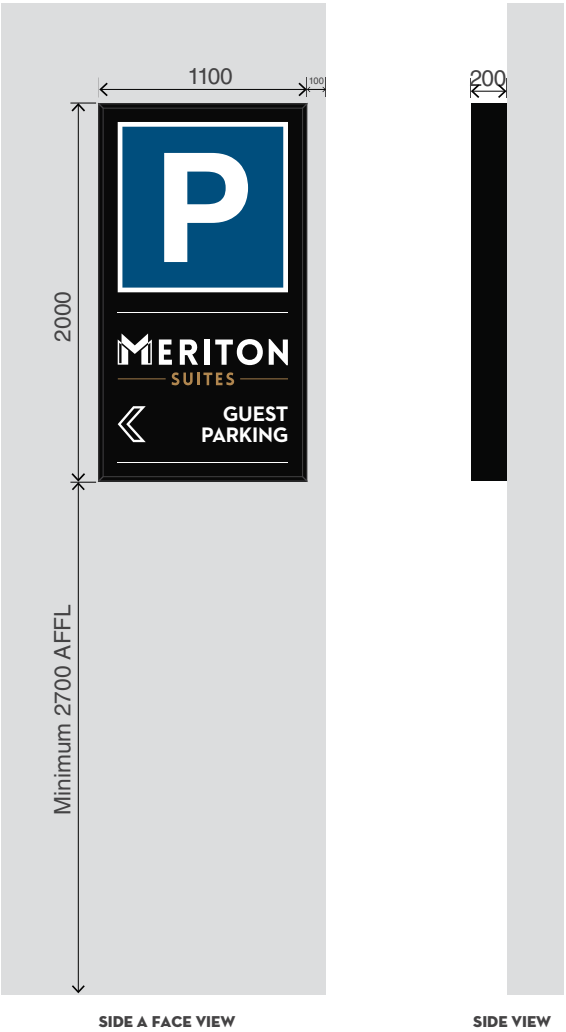
**SPECIFICATION:**  
Fabricated 200mm(d) lightbox 2 pac painted to match DULUX Electro Black Ace. 3mm Opal Acrylic face with printed translucent vinyl graphics. Internally Illuminated with LEDs.

**INSTALLATION:**  
Sign to be cantilevered off concrete wall on site.  
Baseline of sign to sit a minimum of 2700 FFL.

All signs to have engineering approval prior to production



P.E1:	CAR PARK - CANTILEVERED
SIZE:	1100 x 1800mm(h)
SCALE:	1:20 @ A3
SIGN ID:	PE.1



PE.1:	PARKING ENTRY LIGHTBOX
SCALE:	1:40 @ A3
SIGN ID:	PE.1



**SPECIFICATION:**  
100mm(d) fabricated lettering 2pac painted Matt black.  
Opal acrylic faces with Day/Night Vinyl applied to the face  
(will appear black during the day and white at night when sign is illuminated). Letters to each be Internally illuminated with LEDs.

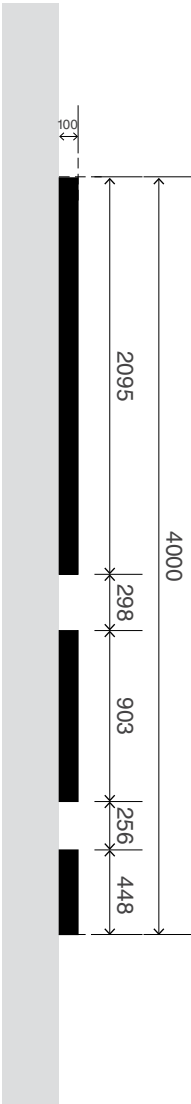
**INSTALLATION:**  
Fixed to wall on site using pins.  
To be connected to relay system to prevents faults.

All signs to have engineering approval prior to production



ID.01: ID SIGN WALL MOUNTED

SIZE:	4000 x 5645mm(h)
SCALE:	1:40 @ A3
SIGN ID:	ID.01



ID.01: ID SIGN WALL MOUNTED

SIZE:	4000 x 5645mm(h)
SCALE:	1:40 @ A3
SIGN ID:	ID.01



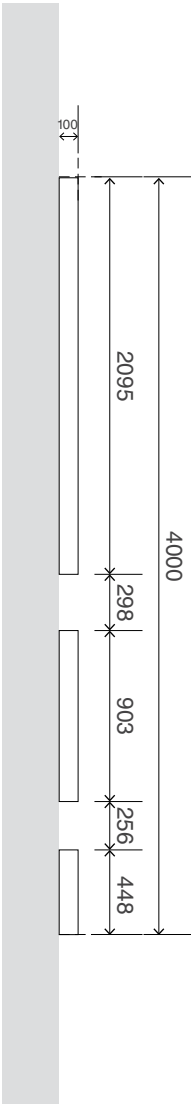
**SPECIFICATION:**  
100mm(d) fabricated lettering 2pac painted Matt white.  
Each components to have Opal acrylic faces.  
Letters to each be Internally illuminated with LEDs.

**INSTALLATION:**  
Fixed to wall on site using pins.  
To be connected to relay system to prevents faults.

All signs to have engineering approval prior to production



ID.02:	ID SIGN WALL MOUNTED
SIZE:	4000 x 5645mm(h)
SCALE:	1:40 @ A3
SIGN ID:	ID.02



ID.02:	ID SIGN WALL MOUNTED
SIZE:	4000 x 5645mm(h)
SCALE:	1:40 @ A3
SIGN ID:	ID.02



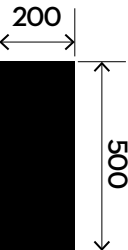
**SPECIFICATION:**  
Fabricated 200mm(d) lightbox 2 pac painted to match DULUX Electro Black Ace. 3mm Opal Acrylic face with computer cut matt black vinyl graphics. Internally Illuminated with LEDs.

**INSTALLATION:**  
Sign to be fixed securely to facade.  
Baseline of over head signs to sit a minimum of 2700 FFL.

All signs to have engineering approval prior to production



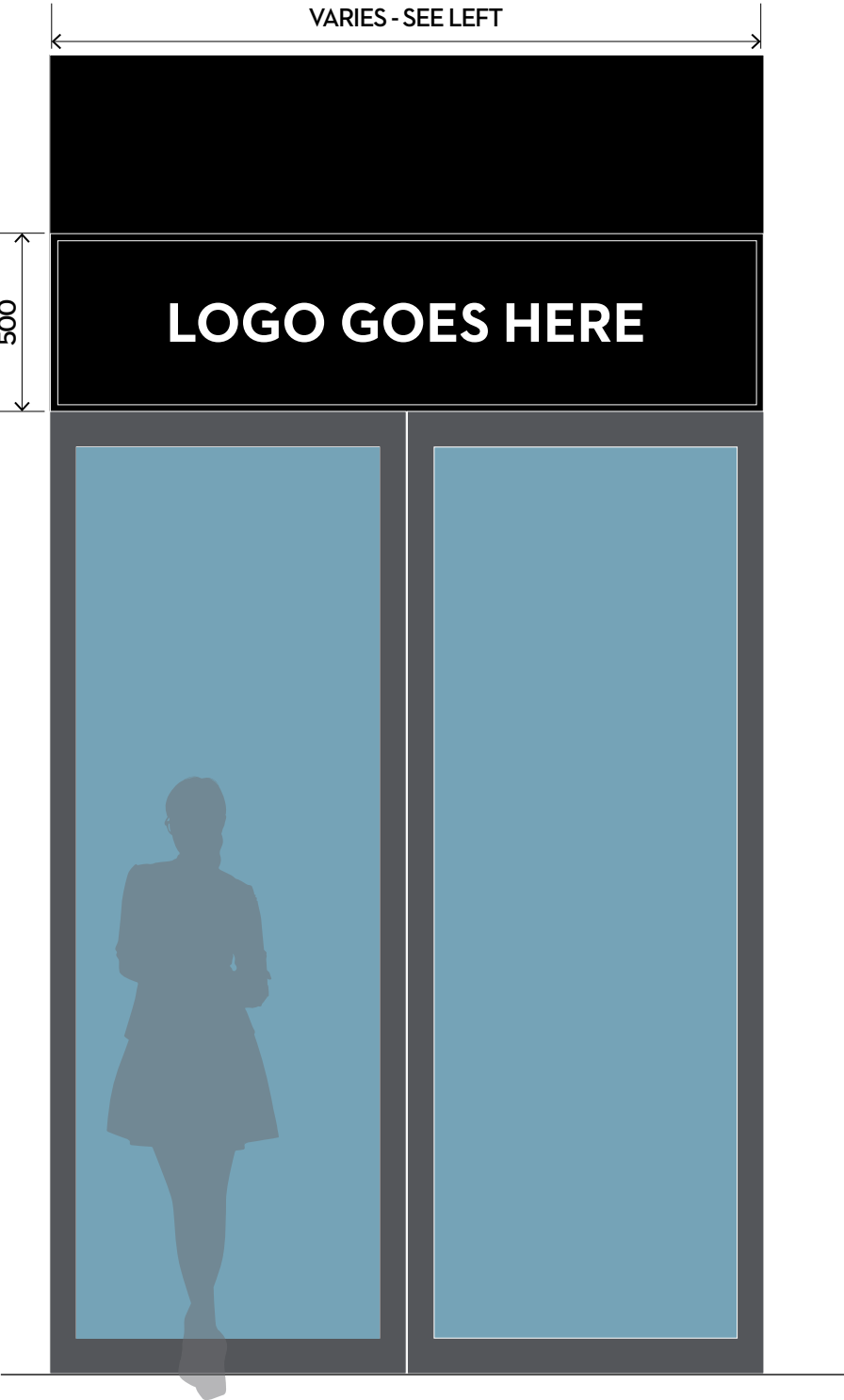
AE: ABOVE ENTRY RETAIL LIGHT BOX  
ELEVATION: Face Dimensions  
SCALE: 1:20 @ A3  
SIGN ID: AE.01, AE.02, AE.04



AE: ABOVE ENTRY RETAIL LIGHT BOX  
ELEVATION: Side View  
SCALE: 1:20 @ A3  
SIGN ID: AE.01, AE.02, AE.03, AE.04



AE: ABOVE ENTRY RETAIL LIGHT BOX  
ELEVATION: Face Dimensions  
SCALE: 1:20 @ A3  
SIGN ID: AE.03



CL

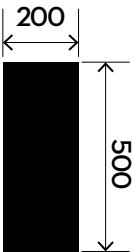
**SPECIFICATION:**  
Fabricated 200mm(d) lightbox 2 pac painted to match DULUX Electro Black Ace. 3mm Opal Acrylic face with computer cut matt black vinyl graphics. Internally Illuminated with LEDs.

**INSTALLATION:**  
Sign to be cantilevered off concrete wall on site.  
Baseline of over head signs to sit a minimum of 2700 FFL.

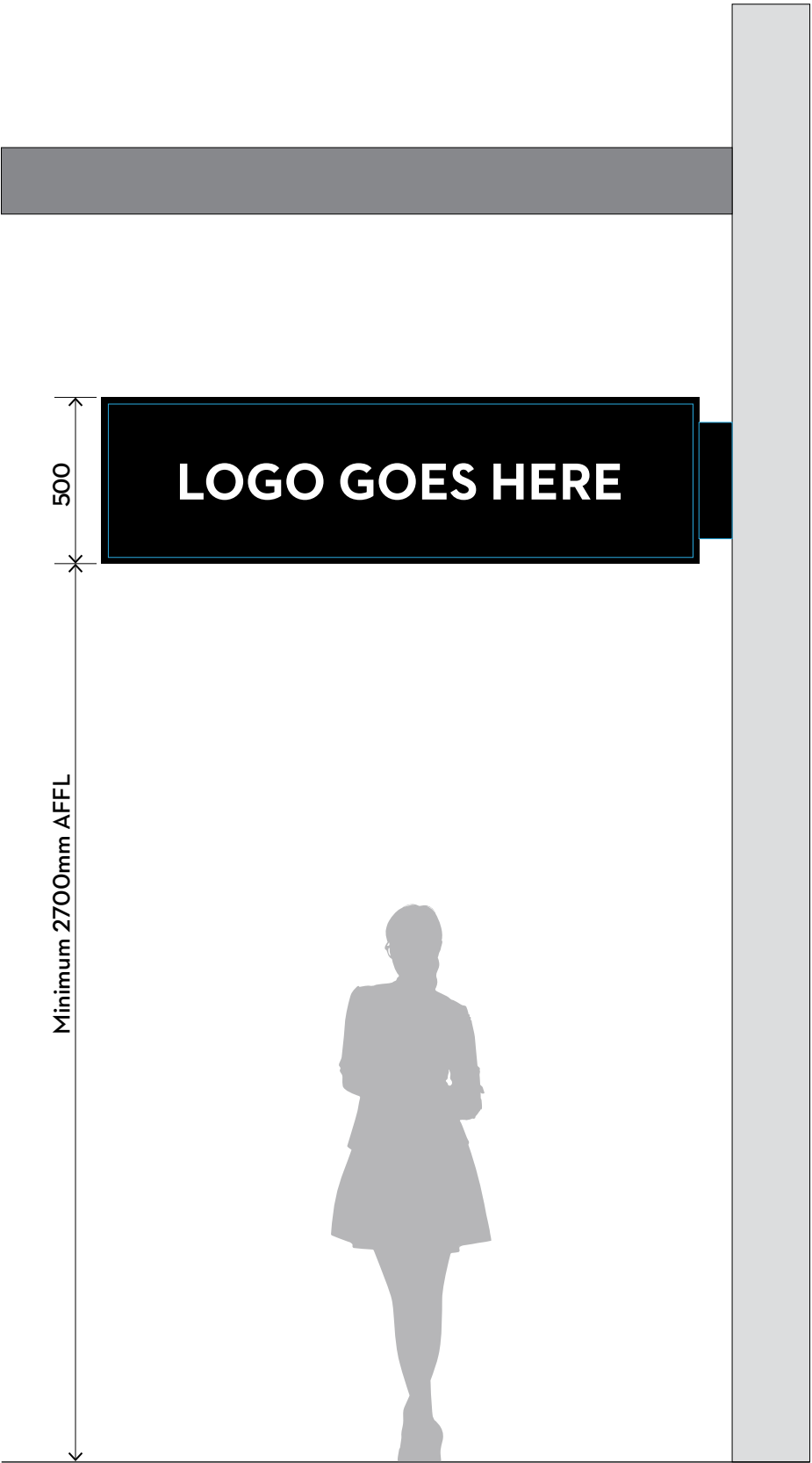
All signs to have engineering approval prior to production



CL: CANTILEVERED LIGHT BOX  
ELEVATION: Face Dimensions  
SCALE: 1:20 @ A3  
SIGN ID: CL.01, CL.02, CL.03, CL.04, CL.05, CL.06



CL: CANTILEVERED LIGHT BOX  
ELEVATION: Side View  
SCALE: 1:20 @ A3  
SIGN ID: CL.04, CL.02, CL.03, CL.04, CL.05, CL.06



CL: CANTILEVERED LIGHT BOX  
ELEVATION: Placement on Elevation  
SCALE: 1:20 @ A3  
SIGN ID: CL.01, CL.02, CL.03, CL.04, CL.05, CL.06



**DEVELOPMENT:** MERITON SUITES LIEVEPOOL

**PROJECT:** External wayfinding signage

**SITE ADDRESS:** 167 NORTHUMBERLAND ST LIVERPOOL, NSW 2170

**DATE:** 10/03/2020

**VERSION:** V1

**DRAWN BY:** TM

**PAGE:** 12 OF 16

**NOTES:** -

© Copyright Meriton Group 2020.  
DO NOT SCALE from this document.  
Use figured dimensions only. Contractors to check & confirm all measurements on site prior to production. This document is strictly confidential. Do not copy, distribute or reproduce without prior written consent.

**SPECIFICATION:**  
20mm(d) laser cut acrylic 2 pac painted to match DULUX Bright White with a matt finish.

**INSTALLATION:**  
Adhesive fixed direct to facade on site.



ES.01:	ENTRANCE SIGN
SIZE:	978 x 3220mm(h)
SCALE:	1:40 @ A3
SIGN ID:	ES.01



ES.01:	ENTRANCE SIGN
SIZE:	978 x 3220mm(h)
SCALE:	1:40 @ A3
SIGN ID:	ES.01



SS.01

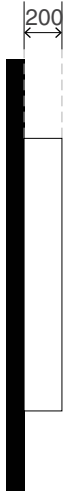
SS.03

**SPECIFICATION:**  
200mm(d) fabricated lettering 2pac painted Bright White with a matt finish.  
Opal acrylic faces. Letters to each be Internally illuminated with bright white LEDs.

**IINSTALLATION:**  
Securely fixed direct to facade on site.  
Electrical wiring to be connected to relay system to prevents faults.  
All signs to have engineering approval prior to production



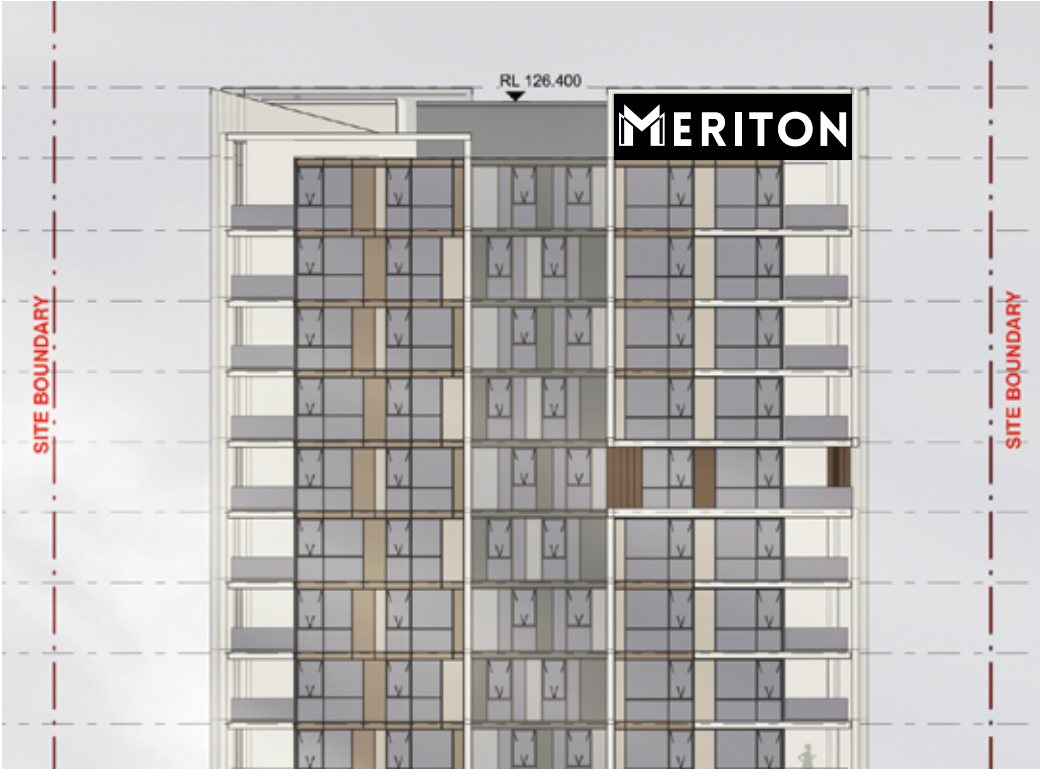
SS: SKY SIGN 'MERITON'  
VIEW: FACE VIEW  
SCALE: 1:50 @ A3



SS: SKY SIGN 'MERITON'  
VIEW: FACE VIEW  
SCALE: 1:50 @ A3



SS.01: SKY SIGN 'MERITON'  
SCALE: NTS  
SIGN ID: SS.01



SS.03: SKY SIGN 'MERITON'  
SCALE: NTS  
SIGN ID: SS.03



**DEVELOPMENT:** MERITON SUITES LIEVEPOOL  
**PROJECT:** External wayfinding signage  
**SITE ADDRESS:** 167 NORTHUMBERLAND ST LIVERPOOL, NSW 2170

**DATE:** 10/03/2020  
**VERSION:** V1  
**DRAWN BY:** TM  
**PAGE:** 14 OF 16

**NOTES:** -

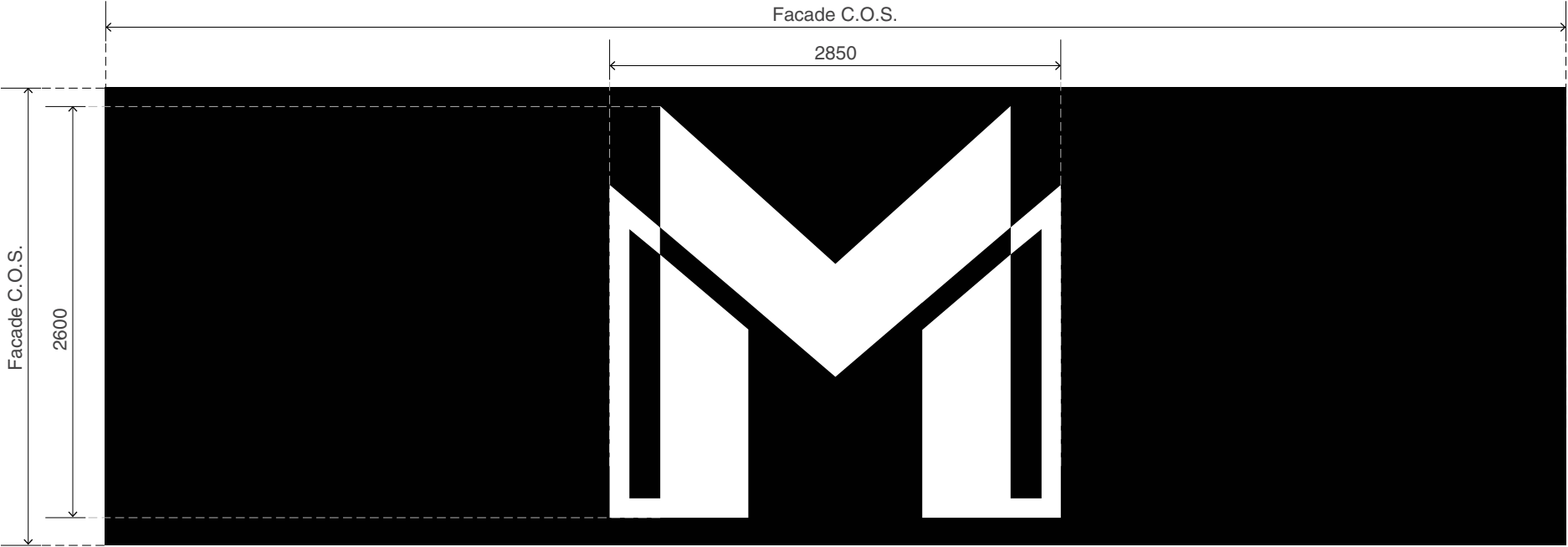
© Copyright Meriton Group 2020.  
DO NOT SCALE from this document.  
Use figured dimensions only. Contractors to check & confirm all measurements on site prior to production. This document is strictly confidential. Do not copy, distribute or reproduce without prior written consent.

SS.02

SS.04

**SPECIFICATION:**  
200mm(d) fabricated lettering 2pac painted Bright White with a matt finish.  
Opal acrylic faces. Letters to each be Internally illuminated with bright white LEDs.

**IINSTALLATION:**  
Securely fixed direct to facade on site.  
Electrical wiring to be connected to relay system to prevents faults.  
All signs to have engineering approval prior to production



SS: SKY SIGN 'M'  
VIEW: FACE VIEW  
SCALE: 1:40 @ A3



SS: SKY SIGN 'M'  
VIEW: FACE VIEW  
SCALE: 1:40 @ A3



SS.02: SKY SIGN 'M'  
SCALE: NTS  
SIGN ID: SS.02



SS.04: SKY SIGN 'M'  
SCALE: NTS  
SIGN ID: SS.02



**DEVELOPMENT:** MERITON SUITES LIEVEPOOL

**PROJECT:** External wayfinding signage

**SITE ADDRESS:** 167 NORTHUMBERLAND ST LIVERPOOL, NSW 2170

**DATE:** 10/03/2020

**VERSION:** V1

**DRAWN BY:** TM

**PAGE:** 15 OF 16

**NOTES:** -

© Copyright Meriton Group 2020.  
DO NOT SCALE from this document.  
Use figured dimensions only. Contractors to check & confirm all measurements on site prior to production. This document is strictly confidential. Do not copy, distribute or reproduce without prior written consent.



PROJECT: Meriton Suites, Liverpool  
ISSUE: 01  
DATE: 10/03/2020  
ADDRESS: 167 NORTHUMBERLAND ST, LIVERPOOL

**PREVIOUS SUBMISSIONS:**

DATE	DESCRIPTION	FILE NAME:
10/03/2020	ISSUE 01	MSA-Liverpool_ExternalSignage_v1